

Be Mine Heart Appliqué Intro to Wings

Main skills and tools we will learn in this lesson:

-In this lesson we will learn how to create a basic appliqué design in Creative DRAWings®, how to use alignment tools with text, and introduce ourselves to Wings' Modular to color sort.

For this design, we will be using our heart clipart. Make sure to download it at the website www.creative-drawings.com



1. Open Creative DRAWings® . In the Artwork Source box select **Create New**. Since we want to create a new embroidery using our heart image we will select **From File** and locate our heart bitmap. In the Hoop Selection box select your **100 x100 Hoop**. **Click Next**.

2. The Artwork Image box appears, Select "**Trace (Convert To Outlines)**". When we select this option, Creative DRAWings® will automatically assign stitches to our design. **Click Next**. The Trace Image box appears. Change the color limit to "2". **Click Trace**.

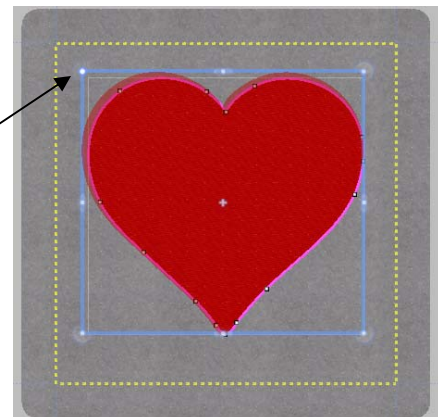
Changing the color limit to 2 will eliminate un-necessary colors we won't need to make our heart appliqué.

3. In the Fabric Selection box I selected "**Standard Normal**", You can choose whatever type of fabric you will be embroidering on here. Click "**Finish**".

Our Image will appear in our 4 x 4 hoop. Now we can delete the white stitches that were automatically generated.

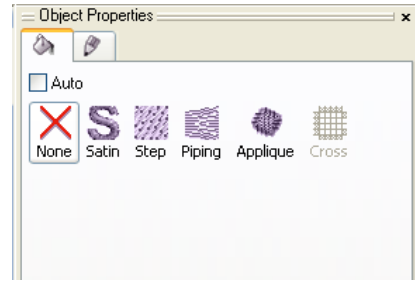
4. To delete the white background stitches that have generated simply click once on a white section to select it, then **right click**, and select "**Delete**".

5. Now we need to resize our heart to fit in our 4x4 hoop. To do this **click once** on the heart to select it, then **grab a corner and drag** it in to size it down.



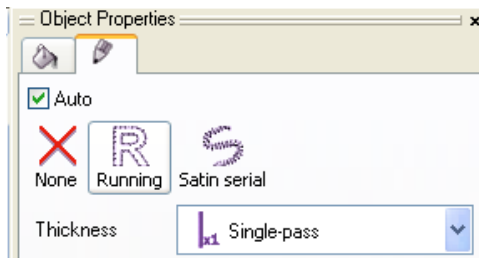
6. With our heart selected, look at the object properties box located at the right hand side of your screen. Under the **Fill Tab**, **Select None**.

Since we are making an appliqué we won't be needing our heart design to be filled in with stitches. Instead we will just play around with the outline.

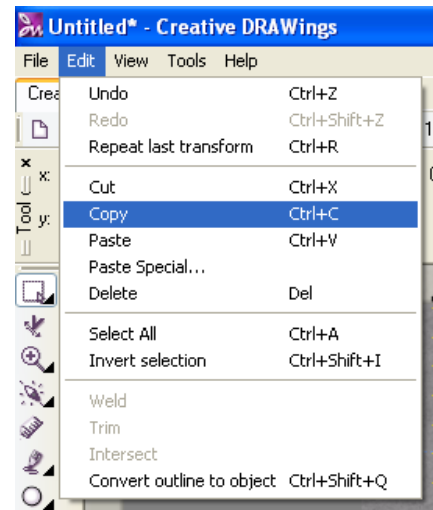


7. Now we have to assign an outline stitch to our heart. To do this, make sure your heart is selected, then while **holding down your shift key** click on a **blue** color chip.

In your object properties box, click on the pen icon. Make sure **Running** is selected.

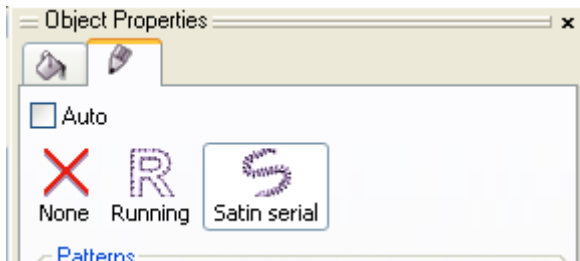


8. Now we need to copy and paste another outline right on top of the one we just created. To do this go to **Edit and Copy**, then **Edit and Paste**.

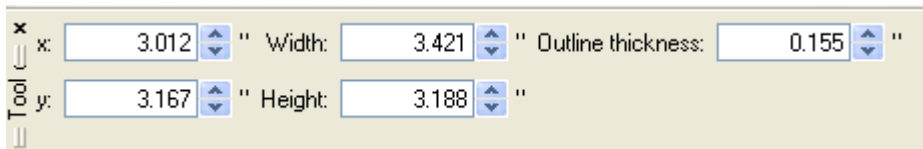


9. We need to change the color of this outline to distinguish it from the first one. Hold down your **shift key** and click on a **yellow** color chip.

10. **Copy and Paste** one more time. This time, change your color chip color to **red**. We are going to change the outline from Running to **Satin Serial** for this outline, do so in the object properties box.



11. In the Tool Bar, change your **Outline Thickness** to **.155**.



12. Now we are going to add text to our heart design. To do so, **click on the T icon** located in your left hand side toolbar. Then click in the heart. In the upper left hand corner of the screen, you can choose your font. I chose Franklin Gothic Demi, but any block type font will work.

Your computer will have different fonts then mine, this is normal.

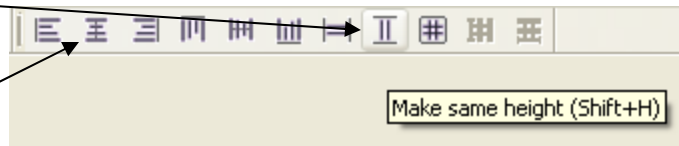


13. Type the word BE. Click your **selection Tool**. Click and drag to make your text bigger, appropriate to the size of heart. The height of my letters is .50 for this font. Then move it to the upper center of the heart. Now, using the same font, create the word MINE. Move it below BE.



14. While **holding down shift click** on the word BE and the word MINE. This will select both of or words. You can make your letters for MINE the same height as BE easily by **clicking on this icon**.

You can also easily align the centers of your text vertically by **clicking on this icon**.

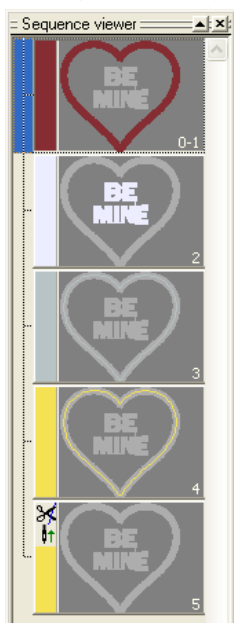


Now your design should look like this:

Our design is done, but now we want to go to Wings' Modular to color sort our design and make sure it stitches out in the order an appliqué should.



15. **Click on File, Export, To Editor.** This will bring our design to Wings!

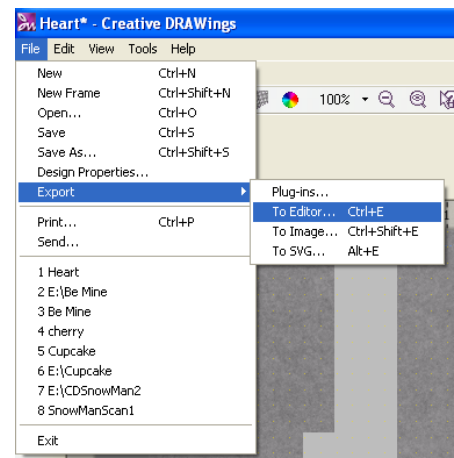


16. In the Sequence viewer you can see exactly what is going to stitch out and in what order.

Let's arrange our order like this:

- Blue Running stitch
- Yellow Running stitch
- Red Satin stitch
- White BE MINE letters

To move your order around use your **page up** and **page down** keys on your keyboard.



17. **Click on the blue running stitch.** Press your **Page Down** key on your keyboard until it gets to the top of the sequence viewer.

18. **Click on the yellow running stitch.** There are two yellow blocks, so select them both by holding down your **control key** and clicking on each of them. Now press your **Page Down** key on your keyboard to move them just below our blue running stitch.

Now your order should look like this:



Now all you have to do is save your embroidery design. To do this go to **File, Save As, select your machines format, and Save.**

