

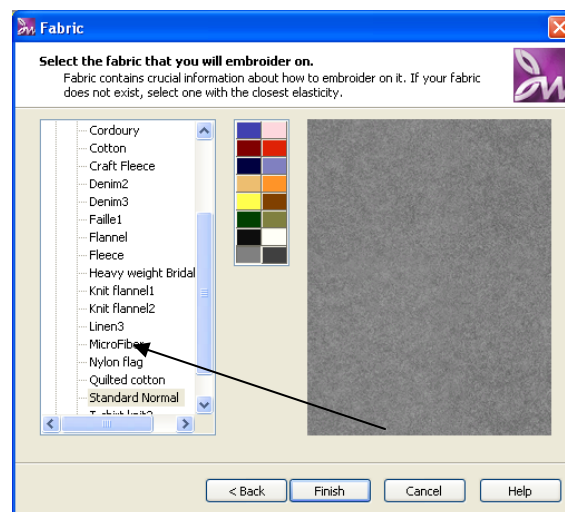
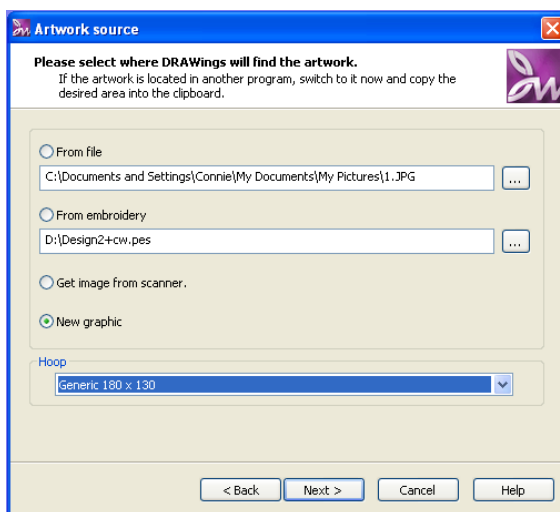


## Embossed Embroidery with Creative DRAWings®

Create and stitch flawless embossed embroidery using Creative DRAWings®. This technique is perfect for stitching on fleece or towels. Monogram hand towels to give as a personalized gift for that new bride or any occasion!

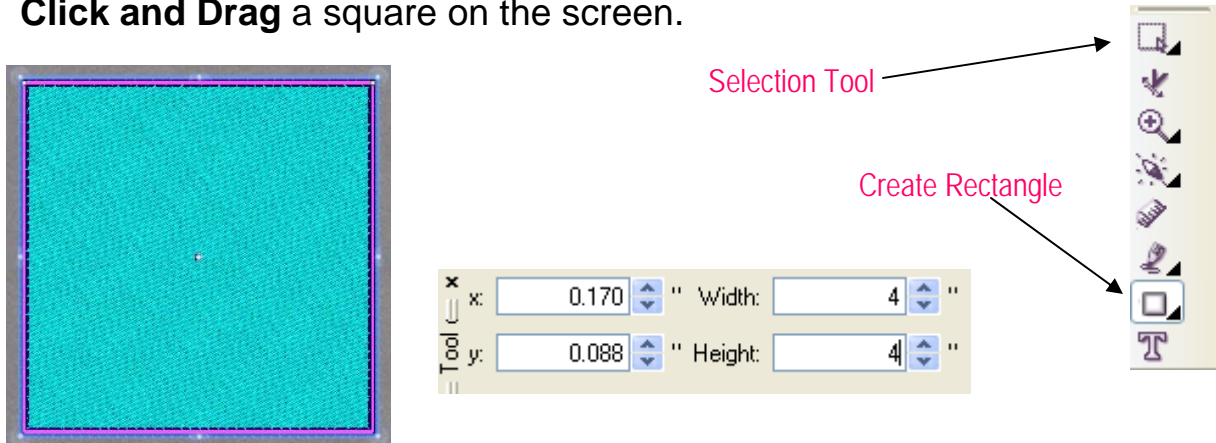


1. Open Creative DRAWings®. The New Design window will open. Select **Create New**. Click **Next**.
2. In the Artwork Source Window choose **New Graphic**. *Selecting New Graphic will open a blank workspace to create a design.*
3. For Hoop select **Generic 180 x 130**. Click **Next**.
4. The Fabric Window will appear. Choose **Fleece** and select a color. I chose grey because it is easy on the eyes. Click **Finish**.



*This design we are going to create works well with fabrics that have a high nap, such as fleece or terry cloth. If you are going to embroider this on a towel you should change the fabric setting to toweling. Since our stitches will be pressing the nap of our fabric down where there is embroidery, the open areas of the design will be puffy, creating an embossed effect.*

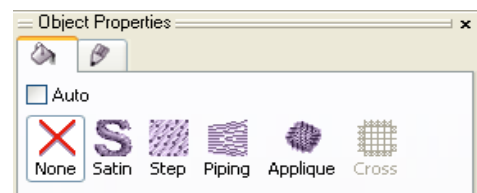
5. On the left hand side of your screen select the **Create Rectangle Tool**. **Click and Drag** a square on the screen.



6. Click on your **selection tool** located on the left hand side of your screen. Then **click on your square** to select it. Once your square is selected you will see that it now has sizing dots in each of the corners and on the sides and top/bottom.

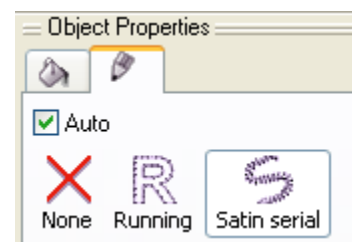
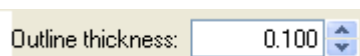
7. Now resize the design to fit the hand towel. You can resize two ways. Either click the corner resize dot and drag or look at the top of the screen and change square **width and height to 4**. This will create a perfect 4 x 4 inch square.

8. With your square still selected **change the Fill to none. Change the outline of the square to Satin Stitch.**

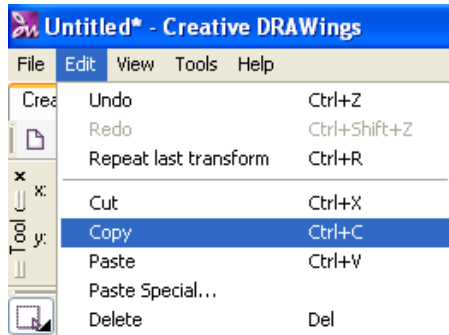


(If there is no outline, you can add one easily by holding down the **shift key** while clicking on a color chip.)

9. **Change the Outline Thickness of this satin stitch to .1**. Your outline thickness tool bar is located towards the top of your screen.



10. While your square is still selected, **Go to Edit** and **Select Copy** to make a copy of our square. Then **Go to Edit** again and **Select Paste**. These functions are located on the very top of your screen.



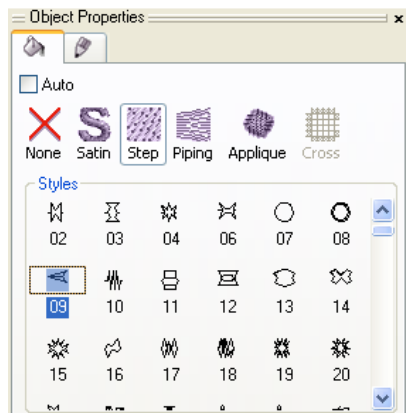
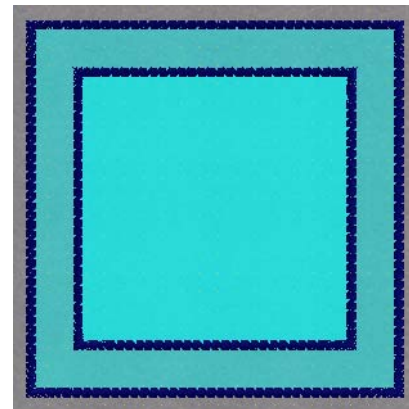
Now there are two squares, one right on top of the other. Now size the second square down so it is 3 x 3 inches.

11. To size down the second square, **go to the width and height settings and enter 3 for both**. There are now two squares.

Creative DRAWings® automatically kept the settings from the last square, so there is no need to change the outline thickness of the second squares.  
\*Less work for us\*

Now the design should look like this:

*We want to add a fill to the inside of the second square. This will keep the nap of the fabric down to help create an embossed effect.*



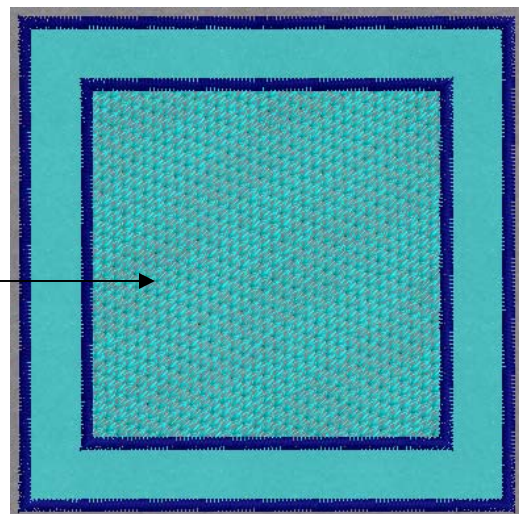
12. While the inside square is selected **click on Step** and **select Style 09**.

The design should now look like this:



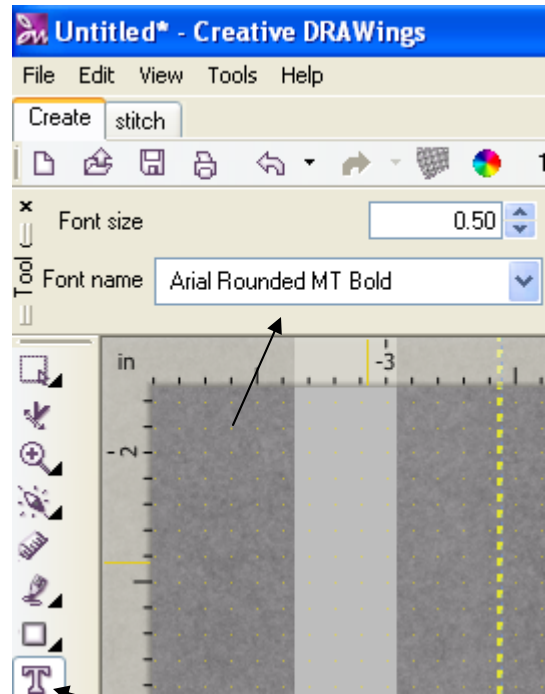
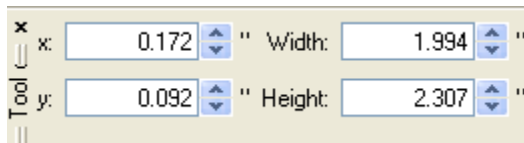
Style 09

Close Up



13. Click on Your Text Tool. Click in the center of your inner square. At the top of your screen switch the Font Name to Arial Rounded MT Bold, on the font of your choice. Click back in the center of your inner square to set the Font Style.

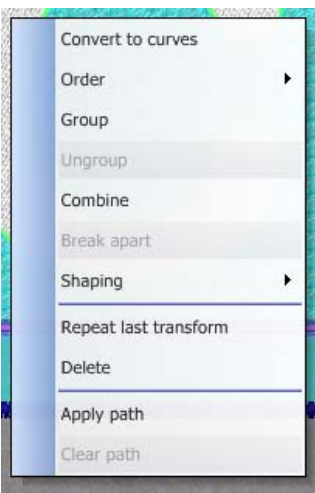
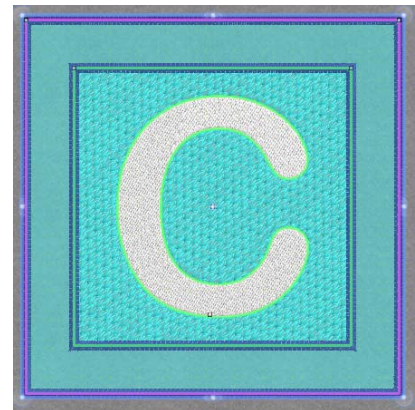
14. Type the first letter of your name. I used the letter "C". Size the letter so that it is 2.307 for the height. Your width will be different depending on the letter you choose so don't worry about that.



Text Tool

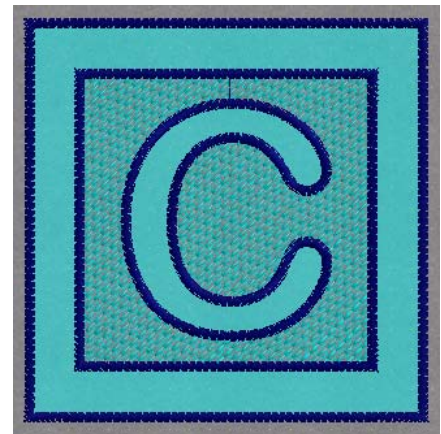
Now your design should look something like this:

15. Remove the stitches that fill the letter "C" so that the fabric shows. To do this. Select your letter and while holding down your control key click on the inside of the inner square. This will select both segments for us. While both segments are selected right click and click on Combine.

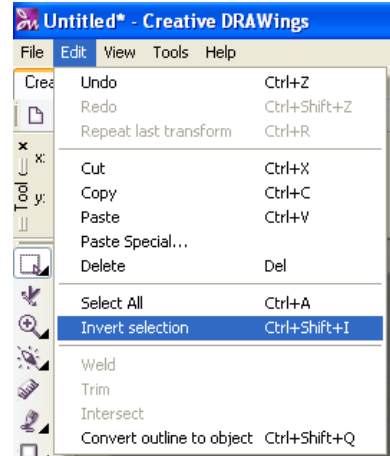
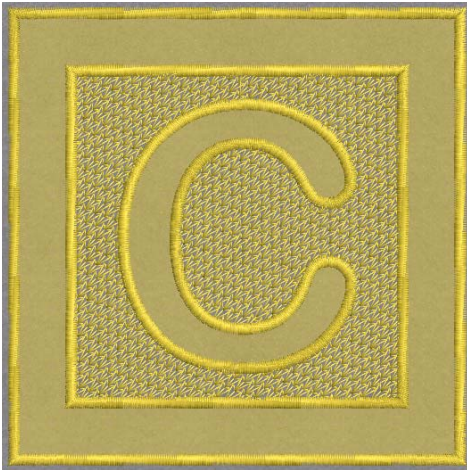


16. Change the outline of the letter to satin stitch. The thickness should be set to .1.

Now your design should look like this: →



17. This design should be a single color design. **Go to Edit and click on Select All.** While **holding your shift key on your keyboard click on a color chip** located at the bottom of your screen. This will change all fills and outlines to that color.



We are done with our design! How easy was that? Last step is to save your design.

### To save your design:

Go to **File select Save As.** Locate where you would like to save your design and choose your machine format in the drop down menu, **Click Save.**

### TIP TIME!

Before stitching out this design you will need to use a water soluble topping to place on top of your fleece or terry cloth. This will keep the nap of the fabric down while your design is being stitched. If you are embroidering on light fabric select a slightly darker Mega Sheen thread to embroider with. If you are using a dark fabric select a slightly lighter thread. Tone on Tone embroidery is timeless. Don't forget to use a tear away or a tear away wash away stabilizer on the back. (That way you won't see white stabilizer on the back of your towel.) Some towels are too thick to hoop. If that is the case then hoop up your tear away stabilizer, spray it with temporary sticky spray and press your towel on top. Now your towel is ready to "go for a ride." If you do use sticky spray, be sure to use a SCHMETZ GOLD Needle!

**Check the FREE Creative DRAWings Yahoo Group @  
[www.yahogroups.com](http://www.yahogroups.com)**

**Visit [www.schmetzneedles.com](http://www.schmetzneedles.com)**